

## A Drunkard's Path to Big Island Quilt Co.

Cindy Prosser worked at the Upjohn Farms, close to the Eastwood Mall. On a whim, she went into Compere Fabrics and immediately fell in love with "A Drunkard's Path" quilt hanging on the wall. She knew she had to make it ... no quilting experience, no quilting class, no rotary cutter, no quarter-inch foot! When she left the Upjohn Company, all she did for the first year was take quilting classes at Quilts Plus in Plainwell and make quilts.

When Quilts Plus moved from Plainwell to Kalamazoo, she decided if she couldn't own a quilt shop, she could work for one. She spent the next 8 years working at Quilts Plus, learning about the business of quilting and discovering that her art and color talents were valuable when helping others make fabric selections.

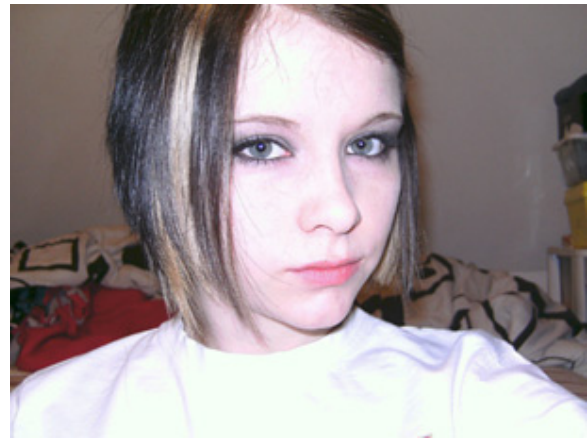
When Cindy decided to open Big Island Quilt Co. (the village of Schoolcraft was called Big Island by the Settlers), she moved into her current location on US-131 in Schoolcraft and stocked the shelves with fabrics that complement those found at Quilts Plus.

Cindy believes that shop-hops help quilters discover new projects and different fabric lines. They'll find munchies, fabric specials and more goodies as they "hop" from shop to shop. Big Island Quilt Co. joins in numerous shop-hops throughout the year, partnering with stores in both Michigan and Indiana. She says that quilters, 400-600 depending on the number of shops participating, get a chance to see the unique personality of each shop and will find different fabrics at each stop.

Big Island Quilt Co. offers long-arm quilting services to its customers. They can also bring their machines in for service. As Big Island Quilt Co. approaches its 5<sup>th</sup> anniversary, Cindy thinks about its future. More classes are a possibility. Cindy offers ASG members a frequent buyers card. If we bring our membership card with us, and spend \$20.00, she'll also give us a fat quarter...sounds like our own private shop-hop to me. She invites us to visit her at:

Big Island Quilt Co.  
13210 North US-131  
Schoolcraft, MI 49087  
269-679-3101  
[www.bigislandquiltco.com](http://www.bigislandquiltco.com)

## CONGRATULATIONS



Sahrie Doezema, a junior at Martin High School and a member of Kalamazoo ASG was awarded a \$500 Art Scholarship from The General Federation of Women's Clubs-Gun Lake.

Roberta Seiss, her art teacher said, "She is a joy to have as a student. Her work is exemplary. Each art project is well thought out and executed. She is a hard worker in art class but also in other classes."

**"Sahrie is quite a seamstress and has helped me personally, sewing together some weaving projects," Seiss said. "She sews costumes for the drama department, and designs, sews and wears her own clothes."**

"As a class advisor, I have seen Sahrie in a leadership role many times. She is a class officer, organizes class competitions and leads class meetings. Anything to do with school, she is there whether she's in front of the crowd in a play or our coffee house, designing floats or banners for homecoming, or organizing an art sale for the local library."

She is a member of the National Honor Society and carries a 4.0 grade point average.

*Sahrie is Marlene Parks' granddaughter.*

